



aksa POWER
GENERATION

**POWER
YOUR
FUTURE**



PRODUCT LINE



KAZANCI HOLDİNG

INDEX

| | |
|-------------------------------|----|
| Introduction | 2 |
| Portable Generating Sets | 8 |
| Diesel Generating Sets | 10 |
| Control Panels & Power Panels | 34 |
| Canopies | 36 |
| Containers | 38 |
| Mobile Lighting Towers | 39 |



Aksa Cerkezkoy Factory Tekirdag - TURKEY

Aksa China Factory, Changzhou - CHINA



The roots of Kazanci Holding were established in 1950's. Embracing principles of "customer satisfaction and reliance" as its main priority, Kazanci Holding has been one of the leading firms in the Turkish energy market with manufacturing generating sets, natural gas distribution and installation-operation of power plants.

Since its foundation in 1984, being the leading company in the Turkish market; Akxa Power Generation takes place among the top 200 industrial enterprises and exporter firms in Turkey.

In addition, Akxa is rightfully proud of being one of the

leading generating sets manufacturers in the world with the total amount of 40.000 gasoline, diesel and natural gas generating sets ranging from 1 to 3125 kVA manufactured per year at its four production facilities, in Cerkezkoy - Turkey, Changzhou - China, Louisiana - The U.S.A. and a trade center in Rotterdam - The Netherlands.

Today, exporting more than of its production, Akxa Power Generation progresses towards the goal of succes globally. With its 24 overseas offices, 1 representative office, Akxa supplies generating sets all around the world. Akxa Power Generation keeps continually investing in technology to be a pioneer of innovation.

INTERNATIONAL OFFICES OF AKSA POWER GENERATION



Algeria



China



Ghana



Indonesia



Iraq



Kenya



Kazakhstan



Netherlands



Russia



Singapore



South Africa



Sudan



U.A.E.



U. Kingdom



U.S.A.



Uzbekistan



Vietnam

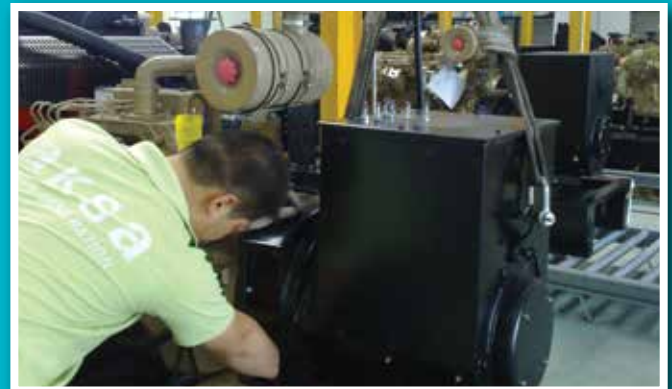


Being one of the first natural gas generating sets manufacturers in the world, Akxa also has a quite advantage in synchronization projects and progressively pursues improvements in generating sets with less fuel consumption, lower sound levels, and lower amounts of exhaust emission through its research and development works.

Akxa Rental is established to meet urgent and mobile power needs of its customers and serves internationally with its wide product range and experienced staff both from Istanbul and Dubai head offices. Mentioned organizations below are some of Akxa Rental's references:

Istanbul Conquest Celebrations (2014), Beşiktaş-Liverpool UEFA Cup (2015), Istanbul G20 Summit (2016), IGA Airport construction (2017), Antalya Expo (2017); Harbiye Open Air Concerts (2015-2016-2017);

Akxa Service & Spare Parts company provides around the clock emergency parts and service support for Akxa products. To keep Akxa products in top condition throughout the world, the company is dedicated to offer "the best" to its customers with 110 country-wide authorized dealerships, 300 technical support employees and spare parts stocks in after sales service, assistance and support.





www.akso.com.tr



PORTABLE GENERATING SETS

Portable Generating Sets



AKSA POWER



Portable Generating Sets Specifications

- Compact power units
- Over Head Valve (OHV), 4 Stroke, gasoline fueled engine
- Diesel engine for AAP 4200DE and AAP 8000DE genset
- Oil safety; engine stops when the oil level is low
- Electric Starter is available
- Current output protected by a circuit protector
- AAP 2200i model are inverter generators



Single and Three Phase Generating Sets

| Genset Specifications@50Hz, 230V & 400V | | | | | | | | Engine 3000 rpm | | | | | | Dimension & Weight | | | | | |
|---|------------|-----------------|-----------------|--------------|--------------|-----------------|-------|-----------------|----------------|------------|----------|------------|-----------------------|-------------------------|-----------------|------------|--------------------------------|----------------|--------|
| Fuel | Model Name | AC Rated Output | | | DC12V | AC Max Output | | Engine | | | Cylinder | | Fuel Consumption L | Fuel Tank Capacity L | L x W x H L | Dry kg. | Noise Level @ db(A) (7m) | Trolley Kit | Canopy |
| | | ISO8528* kW | cosφ 0,8 kVA | Current A | Current A | ISO8528** kW | Phase | HP @3600 | Electric Start | Oil Safety | No | Cap. mL | | | | | | | |
| | AAP 1200 | 0,9 | - | 3,4 | 8 | 1 | 1* | 3 | X | • | 1 | 98 | 0,45 | 7 | 470 x 380 x 405 | 26 | 75 | x | x |
| | AAP 2200i | 2 | - | 8,7 | 8 | 2,2 | 1* | 3 | X | • | 1 | 80 | 1,3 | 4,5 | 499 x 285 x 455 | 21 | 70 | x | x |
| | AAP 3500 | 2,5 | - | 11 | X | 2,8 | 1* | 6,5 | X | • | 1 | 196 | 1,1 | 15 | 610 x 495 x 480 | 44,5 | 75 | x | x |
| | AAP 3500E | 2,5 | - | 11 | X | 2,8 | 1* | 6,5 | • | • | 1 | 196 | 1,1 | 15 | 610 x 495 x 480 | 44,5 | 75 | x | x |
| | AAP 5500 | 4 | - | 17,3 | X | 4,5 | 1* | 11 | X | • | 1 | 337 | 1,8 | 25 | 680 x 540 x 545 | 78 | 73 | • | x |
| | AAP 5500E | 4 | - | 17,3 | X | 4,5 | 1* | 11 | • | • | 1 | 337 | 1,8 | 25 | 680 x 540 x 545 | 83 | 73 | • | x |
| | AAP 8000E | 6 | - | 26 | X | 6,5 | 1* | 15 | • | • | 1 | 419 | 2,6 | 30 | 810 x 540 x 565 | 98 | 77 | • | x |
| | AAP 8000E3 | 6 | 7,5 | 10,8 | X | 6,5 | 3 | 15 | • | • | 1 | 419 | 2,7 | 25 | 680 x 540 x 545 | 95 | 73 | • | x |
| | AB 110ME | 8 | - | 34,8 | X | 8,8 | 1* | 18 | • | • | 2 | 570 | 5 | 16 | 910 x 740 x 750 | 122 | 82,6 | • | x |
| | AB 110TE | 8 | 10 | 14,4 | X | 8,8 | 3 | 18 | • | • | 2 | 570 | 5 | 16 | 910 x 740 x 750 | 117 | 82,6 | • | x |
| | AB 150TE | 10,4 | 13 | 18,8 | X | 14,5 | 3 | 23 | • | • | 2 | 627 | 6,7 | 16 | 910 x 740 x 750 | - | - | • | x |

| | | | | | | | | | | | | | | | | | | | |
|--------|-------------|-----|-----|----|---|-----|----|-----|---|---|---|-----|-----|------|-----------------|-----|----|---|---|
| Diesel | AAP 4200DE | 4,2 | - | 18 | 7 | 4,5 | 1* | 8,6 | • | • | 1 | 406 | 1,5 | 12,5 | 970 x 580 x 785 | 186 | 74 | • | • |
| | AAP 8000DE | 5,5 | - | 24 | 8 | 6 | 1* | 10 | • | • | 1 | 499 | 1,8 | 12 | 850 x 530 x 755 | 175 | 80 | x | • |
| | AAP 8000DE | 6,3 | - | 27 | 8 | 6,8 | 1* | 10 | • | • | 1 | 499 | 2 | 15 | 730 x 630 x 735 | 125 | 92 | • | x |
| | AAP 8000DE3 | 6 | 7,5 | 16 | 8 | 6,5 | 3 | 10 | • | • | 1 | 499 | 2,4 | 15 | 730 x 490 x 690 | 135 | 82 | • | x |

* Power rating according to cosφ=1

• [•]Standard, [x]Not Available

** ISO 8528: Ratings are given for 25°C ambient temperature. Altitude 100m above sea level. Derating, please contact us.

Manufacturer reserves the right to make changes in model, technical specifications, color, equipment and accessories without prior notice.



www.aksa.com.tr



DIESEL GENERATING SETS

Diesel Generating Sets



Standard Open Set Specifications

- CUMMINS 4 cycle, water cooled, 1500 rpm diesel engine
- Compact power units
- Engine mounted cooling radiator and fan
- Electronic governor control
- Electric Starter & charge alternator (24 V D.C.)
- Normal duty, dry type air filter
- Single bearing alternator, IP23 enclosure, class H insulation
- Standard voltage 400/230 V A.C., 50 Hz
- Welded steel base frame with A/ V mounting
- Lube - oil drain hand pump fitted
- 24 V D.C. battery set with cables and rack
- Industrial type silencer and steel bellows delivered loose
- Engine jacket water heater
- Manual for use and installation
- Optional silent enclosure

Three Phase Generating Sets General Specifications

| Genset Specifications | | | | | Engine Specification | | | | | | | Open Version Genset | | Canopy Version Genset | | Control Panel |
|------------------------------------|--------------|-----------|--------------|-------|----------------------|----------|-------|------|--------|----------------------|---------------|---------------------|-------|-----------------------|------------|---------------|
| 50 Hz., 400 / 230V. ⁽¹⁾ | | | | | Model | Cylinder | | | | Fuel | | Dimension & Weight | | Canopy Model | Dry Weight | Model |
| Model Name | kVA Cosφ 0,8 | | kW ISO 8528* | | | Type | Dis. | Bore | Stroke | Consumption %75 Load | Tank Capacity | L. x W. x H. | Dry | | | |
| | (1) Standby | (2) Prime | Standby | Prime | | No. | L. | mm. | mm. | L. / h. | L. | mm. | kg. | | | |
| AC 550 | 550 | 500 | 440 | 400 | QSX15-G8 | 6L | 14.9 | 137 | 169 | 80 | 850 | 3380x1550x2100 | 3850 | MS 80 | 4860 | P 732 |
| AC 700 | 700 | 638 | 560 | 510,4 | VTA28-G5 | 12V | 28 | 140 | 152 | 104 | 1000 | 3644x1550x2270 | 5470 | MS 85 | 7030 | |
| AC 825 | 825 | - | 660 | - | VTA28-G6 | 12V | 28 | 140 | 152 | 133 | 1000 | 3950x1550x2270 | 5900 | MS 85 | 7640 | |
| AC 880 | 880 | 800 | 704 | 640 | QSK23-G3 | 6L | 23.15 | 170 | 170 | 121 | 1500 | 3950x1705x2225 | 5950 | AK 90 | 9100 | |
| AC 1100 K | 1100 | 1000 | 880 | 800 | KTA38-G14 | 12V | 37.8 | 159 | 159 | 161 | 1500 | 4470x1770x2370 | 8600 | AK 96 | 12250 | |
| AC 1100 | 1100 | 1000 | 880 | 800 | QST30-G4 | 12V | 30.48 | 140 | 165 | 151 | 1500 | 3980x1968x2383 | 6770 | AK 96 | 11000 | |
| AC 1410 | 1410 | 1280 | 1128 | 1024 | KTA50-G3 | 16V | 50.3 | 159 | 159 | 199 | 2000 | 4940x2100x2394 | 9900 | AK 98 | 14000 | |
| AC 1650 | 1650 | 1500 | 1320 | 1200 | KTA50-GS8 | 16V | 50.3 | 159 | 159 | 238 | 2000/1900 | 5450x1950x2450 | 10200 | AK 98 | 15100 | |
| AC 2250 | 2250 | 2045 | 1800 | 1636 | QSK60-G4 | 16V | 60.2 | 159 | 190 | 291 | 2000 | 5663x2408x3090 | 15500 | AK 99 | 21100 | |
| AC 2500 | 2500 | - | 2000 | - | QSK60-G8 | 16V | 60.2 | 159 | 190 | 335 | 2000 | 5891x2310x3085 | - | AK 99 | 22000 | |
| AC 3000 | 3000 | 2750 | 2400 | 2200 | QSK78-G9 | 18V | 77.6 | 170 | 190 | 406 | 2500 | 7421x2637x4736 | 16300 | AK 101 | 25000 | |

(1) Emergency Standby Power (ESP): Applicable for supplying power to varying electrical load for the duration of power interruption of a reliable utility source ESP is in accordance with ISO 8528. Overload is not allowed.

(2) Prime Power (PRP): Applicable for supplying power to varying electrical load for unlimited hours. 10% overload capability is available for a period of 1 hour with in 12 hour period of operation.

(3) Fuel consumption according to standby power.

* ISO 8528: Ratings are given for 25 °C ambient temperature. Altitude: 100 m. above sea level. Derating, please contact us or refer to data sheet.

Manufacturer reserves the right to make changes in model, technical specifications, color, equipment and accessories without prior notice.

Diesel Generating Sets



AKSA POWER DIESEL



Standard Open Set Specifications

- AKSA 4 cycle, water cooled, 1500 rpm diesel engine
- Compact power units
- Engine mounted cooling radiator and fan
- Mechanical governor control
- Electronic governor control (APD 110A, APD 135A, APD 165A, APD 200A)
- Electric Starter & charge alternator
- Normal duty, dry type air filter
- Single bearing alternator, IP22 enclosure, class H insulation
- Standard voltage 400 / 230 V A.C., 50 Hz
- Welded steel base frame with A/V mounting
- Fuel tank built in the base frame
- Flexible fuel connection hoses and lube-oil drain valve fitted
- 12 or 24 V D.C. battery set with cables and rack
- Industrial silencer and steel bellows delivered loose
- Engine jacket water heater
- Manual for use and installation
- Optional silent enclosure

Three Phase Generating Sets General Specifications

| Genset Specifications | | | | | Engine Specification | | | | | | | Canopy Version Genset | | Control Panel | | | | |
|------------------------------------|--------------|-----------|--------------|-------|----------------------|-----------|----------|------|------|--------|-----------------------|-----------------------|--------------------|---------------|-------|-----|-----|------|
| 50 Hz., 400 / 230V. ⁽¹⁾ | | | | | Make | Model | Cylinder | | | | Fuel | | Canopy Model | Dry Weight | Model | | | |
| Model Name | kVA Cosφ 0,8 | | kW ISO 8528* | | | | Type | Dis. | Bore | Stroke | Consumption %100 Load | Tank Capacity | | | | mm. | kg. | Auto |
| | (1) Standby | (2) Prime | Standby | Prime | | | No. | L. | mm. | mm. | L. / h. | L. | | | | | | |
| APD 13 A | 12 | 11 | 9,6 | 8,8 | Aksa | A3CRX14 | 3L | 1,36 | 80 | 90 | 3.7 | 32 | 1522 x 823 x 1127 | 470 | P 612 | | | |
| APD 17 A | 17 | 16 | 13,6 | 12,8 | Aksa | A4CRX18 | 4L | 1,81 | 80 | 90 | 4.6 | 32 | 1672 x 823 x 1127 | 520 | | | | |
| APD 25 A | 25 | 22 | 20 | 17,6 | Aksa | A4CRX24 | 4L | 2,55 | 90 | 100 | 6.4 | 60 | 1980 x 950 x 1200 | 790 | | | | |
| APD 35 A | 35 | 32 | 28 | 25,6 | Aksa | A4CRX25T | 4L | 2,54 | 90 | 100 | 8 | 60 | 1980 x 950 x 1200 | 810 | | | | |
| APD 44 A | 44 | 40 | 35,2 | 32 | Aksa | A3CRX32T | 3L | 3,12 | 105 | 120 | 10.3 | 76 | 2094 x 950 x 1359 | 940 | | | | |
| APD 55 A | 55 | 50 | 44 | 40 | Aksa | A4CRX47 | 4L | 4,95 | 108 | 135 | 12.7 | 180 | 2282 x 1008 x 1532 | 1170 | | | | |
| APD 75 A | 75 | 70 | 60 | 56 | Aksa | A4CRX46T | 4L | 4,58 | 108 | 125 | 18.5 | 180 | 2282 x 1008 x 1532 | 1250 | | | | |
| APD 110 A | 110 | 100 | 88 | 80 | Aksa | A4CRX46TI | 4L | 4,58 | 110 | 125 | 23 | 155 | 2390 x 1058 x 1681 | 1685 | | | | |
| APD 135 A | 135 | 122 | 108 | 97,6 | Aksa | A4CRX48TI | 4L | 4,75 | 110 | 125 | 27.7 | 195 | 2600 x 1058 x 1681 | 1790 | | | | |
| APD 165 A | 165 | 150 | 132 | 120 | Aksa | A6CRX65TI | 6L | 6,49 | 105 | 125 | 34.3 | 350 | 3265 x 1163 x 1858 | 2070 | | | | |
| APD 200 A | 200 | 182 | 160 | 145,6 | Aksa | A6CRX69TI | 6L | 6,87 | 108 | 125 | 43 | 350 | 3265 x 1163 x 1858 | 2180 | | | | |

(1) Emergency Standby Power (ESP): Applicable for supplying power to varying electrical load for the duration of power interruption of a reliable utility source ESP is in accordance with ISO 8528. Overload is not allowed.

(2) Prime Power (PRP): Applicable for supplying power to varying electrical load for unlimited hours. 10% overload capability is available for a period

* ISO 8528: Ratings are given for 25 °C ambient temperature. Altitude: 100 m. above sea level. Derating, please contact us.

Manufacturer reserves the right to make changes in model, technical specifications, color, equipment and accessories without prior notice.

Diesel Generating Sets



AKSA POWER DIESEL



Standard Open Set Specifications

- AKSA CUMMINS 4 cycle, water cooled, 1500 rpm diesel engine
- Compact power units
- Engine mounted cooling radiator and fan
- Electronic governor control
- Electric Starter & charge alternator
- Normal duty, dry type air filter
- Single bearing alternator, IP22 enclosure, class H insulation
- Standard voltage 400 / 230 V A.C., 50 Hz
- Welded steel base frame with A/V mounting
- Fuel tank built in the base frame
- Flexible fuel connection hoses and lube-oil drain valve fitted
- 12 or 24 V D.C. battery set with cables and rack
- Industrial silencer and steel bellows delivered loose
- Engine jacket water heater
- Manual for use and installation
- Optional silent enclosure

Three Phase Generating Sets General Specifications

| Genset Specifications | | | | | Engine Specification | | | | | | Open Version Genset | | Canopy Version Genset | | Control Panel | |
|------------------------------------|--------------|-----------|---------------|-------|----------------------|----------|------|-------|--------|----------------------|---------------------|--------------------|-----------------------|--------------|---------------|-------|
| 50 Hz., 400 / 230V. ⁽¹⁾ | | | | | Model | Silindir | | | | Yakıt | | Dimension & Weight | | Canopy Model | Dry Weight | Model |
| Model | kVA Cosφ 0,8 | | kW ISO 8528** | | | Type | Dis. | Bore | Stroke | Consumption %75 Load | Tank Capacity | L. x W. x H. | Dry | | | |
| | (1) Standby | (2) Prime | Standby | Prime | | No. | L. | mm. | mm. | L. / sa | L. | mm. | kg. | kg. | Otomatik | |
| APD 22 C* | 22 | 20 | 17,6 | 16 | 4B3.9-G11 | 4L | 3,90 | 102 | 120 | 4.6 | 180 | 2015x950x1384 | 800 | ACP 5 | 1020 | P 612 |
| APD 33 C | 33 | 30 | 26,4 | 24 | 4B3.9-G12 | 4L | 3,90 | 102 | 120 | 6.1 | 180 | 2015x950x1384 | 820 | ACP 5 | 1040 | |
| APD 43 C | 43 | 39 | 34,4 | 31,2 | 4BT3.9-G2 | 4L | 3,90 | 102 | 120 | 7,3 | 180 | 2015x950x1411 | 900 | ACP 5 | 1120 | |
| APD 66 C | 66 | 60 | 52,8 | 48 | 4BTA3.9-G2 | 4L | 3,90 | 102 | 120 | 10 | 180 | 2015x950x1411 | 1030 | ACP 5 | 1250 | |
| APD 89 C | 89 | 78 | 71,2 | 62,4 | 4BTA3.9-G11 | 4L | 3,90 | 102 | 120 | 13.2 | 180 | 2015x950x1420 | 1080 | ACP 5 | 1300 | |
| APD 110 C | 110 | 100 | 88 | 80 | 6BT5.9-G2 | 6L | 5,90 | 102 | 120 | 17 | 180 | 2348x1004x1409 | 1230 | ACP 6A | 1480 | |
| APD 145 C | 145 | 132 | 116 | 105,6 | 6BTAA5.9-G2 | 6L | 5,90 | 102 | 120 | 23 | 340 | 2350x1080x1645 | 1310 | AK 49 | 1780 | |
| APD 175 C | 175 | 160 | 140 | 128 | 6BTAA5.9-G12 | 6L | 5,90 | 102 | 120 | 26 | 340 | 2367x1080x1731 | 1375 | AK 49 | 1880 | |
| APD 200 C | 200 | 180 | 160 | 144 | 6CTA8.3-G2 | 6L | 8,30 | 114 | 135 | 31 | 340 | 2336x1080x1742 | 1620 | AK 49 | 2140 | |
| APD 220 C | 220 | 200 | 176 | 160 | 6CTAA8.3-G2 | 6L | 8,30 | 114 | 135 | 34 | 470 | 2750x1300x1734 | 2300 | MS 60 CK | 2930 | |
| APD 275 C | 275 | 250 | 220 | 200 | 6LTAA8.9-G2 | 6L | 8,90 | 114 | 145 | 39 | 470 | 2750x1300x1734 | 2370 | MS 60 CK | 3000 | |
| APD 310 C | 310 | 279 | 248 | 223,2 | 6LTAA9.5-G3 | 6L | 9.50 | 116,5 | 148 | 44 | 470 | 2840x1300x2840 | 2660 | MS 60 CK | 3350 | |
| APD 360 C | 360 | 327 | 288 | 261,6 | 6LTAA9.5-G1 | 6 | 9.50 | 116,5 | 148 | 52 | 470 | 2840x1300x1845 | 2740 | MS 60 CK | 3470 | |
| APD 400 CE | 400 | 360 | 320 | 288 | QSZ13-G6 | 6L | 13 | 130 | 163 | 64.6 | 700 | 3104x1550x2291 | 3250 | MS 70 CK | 4150 | P 732 |
| APD 415 C | 415 | 380 | 332 | 304 | 6ZTAA13-G3 | 6L | 13 | 130 | 163 | 56.5 | 700 | 3104x1550x2181 | 3210 | MS 70 CK | 4110 | |
| APD 450 CE | 450 | 400 | 360 | 320 | QSZ13-G7 | 6L | 13 | 130 | 163 | 72 | 700 | 3180x1550x2291 | 3650 | MS 70 CK | 4520 | |
| APD 475 C | 475 | 440 | 380 | 352 | 6ZTAA13-G2 | 6L | 13 | 130 | 163 | 65.1 | 700 | 3180x1550x2181 | 3440 | MS 70 CK | 4340 | |
| APD 500 C | 500 | 450 | 400 | 360 | QSZ13-G2 | 6L | 13 | 130 | 163 | 64.6 | 700 | 3180x1550x2181 | 3440t | MS 70 CK | 4340 | |

* Mechanical governor control

(1) Emergency Standby Power (ESP): Applicable for supplying power to varying electrical load for the duration of power interruption of a reliable utility source ESP is in accordance with ISO 8528. Overload is not allowed.

(2) Prime Power (PRP): Applicable for supplying power to varying electrical load for unlimited hours. 10% overload capability is available for a period

** ISO 8528: Ratings are given for 25 °C ambient temperature. Altitude: 100 m. above sea level. Derating, please contact us.

Manufacturer reserves the right to make changes in model, technical specifications, color, equipment and accessories without prior notice.

Diesel Generating Sets



Standard Open Set Specifications

- PERKINS, 4 cycle, water cooled 1500 rpm diesel engine
- Compact power units
- Engine mounted cooling radiator and fan
- Mechanical or electrical governor
- Electric Starter & Charge alternator
- Normal duty, dry type air filter
- Single bearing alternator, IP23 enclosure, class H insulation
- Standard voltage 400 / 230 V A.C., 50 Hz
- Welded steel base frame with A / V mounting
- Fuel tank built in base frame
- Flexible fuel connection hoses and lube - oil drain valve fitted
- 12 V D.C. battery set with cables and rack
- 24 V D.C. battery set with cables and rack (AP 330 - AP 385)
- Industrial type silencer delivered loose
- Engine jacket water heater
- Manual for use and installation
- Modular silent canopies are available on the whole range

Three Phase Generating Sets General Specifications

| Genset Specifications | | | | | Engine Specification | | | | | | Open Version Genset | | Canopy Version Genset | | Control Panel | |
|-----------------------|--------------|-----------|--------------|-------|----------------------|----------|-------|------|--------|----------------------|---------------------|--------------------|-----------------------|--------------|---------------|-------|
| 50 Hz., 400 / 230V. | | | | | Model | Cylinder | | | | Fuel | | Dimension & Weight | | Canopy Model | Dry Weight | Model |
| Model Name | kVA Cosφ 0,8 | | kW ISO 8528* | | | Type | Dis. | Bore | Stroke | Consumption %75 Load | Tank Capacity | L. x W. x H. | Dry | | | |
| | (1) Standby | (2) Prime | Standby | Prime | | No. | L. | mm. | mm. | L. / h. | L. | mm. | kg. | | | |
| AP 15 | 14,5 | 13 | 11,6 | 10,4 | 403A-15G1 | 3L | 1.496 | 84 | 90 | 2.79 | 50 | 1265x850x1067 | 425 | AK 10 | 565 | P 612 |
| AP 22 | 22 | 20 | 17,6 | 16 | 404A-22G1 | 4L | 2.216 | 84 | 100 | 4 | 38 | 1371x850x1091 | 500 | AK 11 | 615 | |
| AP 33 | 33 | 30 | 26,4 | 24 | 1103A-33G | 3L | 3.3 | 105 | 127 | 5.4 | 80 | 1691x970x1202 | 665 | AK 21 | 880 | |
| AP 50 | 50 | 45 | 40 | 36 | 1103A-33TG1 | 3L | 3.3 | 105 | 127 | 7.98 | 80 | 1691x970x1206 | 750 | AK 21 | 960 | |
| AP 72 | 72 | 66 | 57,6 | 52,8 | 1104A-44TG1 | 4L | 4.4 | 105 | 127 | 11.2 | 130 | 1780x950x1312 | 910 | AK 30 | 1165 | |
| AP 88 | 88 | 80 | 70,4 | 64 | 1104A-44TG2 | 4L | 4.4 | 105 | 127 | 14 | 240 | 2150x1050x1460 | 1040 | AK 40 | 1380 | |
| AP 110 | 110 | 100 | 88 | 80 | 1104C-44TAG2 | 4L | 4.4 | 105 | 127 | 17.1 | 240 | 2150x1050x1467 | 1120 | AK 40 | 1470 | |
| AP 150 | 150 | 135 | 120 | 108 | 1106A-70TG1 | 6L | 7.01 | 105 | 135 | 22.7 | 340 | 2300x1080x1568 | 1260 | AK 49 | 1850 | |
| AP 165 | 165 | 150 | 132 | 120 | 1106A-70TAG2 | 6L | 7.01 | 105 | 135 | 24.7 | 340 | 2300x1080x1667 | 1380 | AK 49 | 1975 | |
| AP 200 | 200 | 180 | 160 | 144 | 1106A-70TAG3 | 6L | 7.01 | 105 | 135 | 32 | 340 | 2300x1080x1642 | 1650 | AK 49 TRP | 2050 | |
| AP 220 | 220 | 200 | 176 | 160 | 1106A-70TAG4 | 6L | 7.01 | 105 | 135 | 34.7 | 340 | 2300x1080x1642 | 1750 | AK 49 TRP | 2220 | |
| AP 250 | 250 | 225 | 200 | 180 | 1206A-E70TTAG2 | 6L | 7,01 | 105 | 135 | 38 | 470 | 2750x1300x1928 | - | MS 60 | 3180 | |
| AP 275 | 275 | 250 | 220 | 200 | 1206A-E70TTAG3 | 6L | 7,01 | 105 | 135 | 41.5 | 470 | 2750x1300x1928 | 2165 | MS 60 | 3180 | |
| AP 330 | 330 | 300 | 264 | 240 | 1506A-E88TAG5 | 6L | 8.8 | 112 | 149 | 48.2 | 470 | 2750x1300x1804 | 2385 | MS 60 | 3065 | P 732 |
| AP 385 | 385 | 350 | 308 | 280 | 2206A-E13TAG2 | 6L | 12.5 | 130 | 157 | 54 | 850 | 3205x1550x2105 | - | MS 80 | 4215 | |
| AP 400 | 400 | 350 | 320 | 280 | 2206A-E13TAG2 | 6L | 12.5 | 130 | 157 | 54 | 850 | 3205x1550x2105 | 3200 | MS 80 | 4220 | |
| AP 440 | 440 | 400 | 352 | 320 | 2206A-E13TAG3 | 6L | 12.5 | 130 | 157 | 62 | 850 | 3205x1550x2105 | 3180 | MS 80 | 4260 | |

(1) Emergency Standby Power (ESP): Applicable for supplying power to varying electrical load for the duration of power interruption of a reliable utility source ESP is in accordance with ISO 8528. Overload is not allowed.

(2) Prime Power (PRP): Applicable for supplying power to varying electrical load for unlimited hours. 10% overload capability is available for a period *ISO 8528: Ratings are given for 25 °C ambient temperature. Altitude: 100 m. above sea level. Derating, please contact us or refer to data sheet.

Manufacturer reserves the right to make changes in model, technical specifications, color, equipment and accessories without prior notice.

Diesel Generating Sets



Standard Open Set Specifications

- PERKINS, 4 cycle, water cooled 1500 rpm diesel engine
- Compact power units
- Engine mounted cooling radiator and fan
- Electrical governor
- Electric Starter & Charge alternator
- Normal duty, dry type air filter
- Single bearing alternator, IP23 enclosure, class H insulation
- Standard voltage 400 / 230 V A.C., 50 Hz
- Welded steel base frame with A / V mounting
- Fuel tank built in base frame between AP 450 - AP 715
- Flexible fuel connection hoses and lube - oil drain valve fitted
- 24 V D.C. battery set with cables and rack
- Industrial type silencer delivered loose
- Engine jacket water heater
- Manual for use and installation
- Modular silent canopies are available on the whole range

Three Phase Generating Sets General Specifications

| Genset Specifications | | | | | Engine Specification | | | | | | | Open Version Genset | | Canopy Version Genset | | Control Panel |
|------------------------------------|--------------|-----------|--------------|-------|----------------------|----------|--------|------|--------|----------------------|---------------|---------------------|-------|-----------------------|------------|---------------|
| 50 Hz., 400 / 230V. ⁽¹⁾ | | | | | Model | Silindir | | | | Yakıt | | Dimension & Weight | | Canopy Model | Dry Weight | Model |
| Model | kVA Cosφ 0,8 | | kW ISO 8528* | | | Type | Dis. | Bore | Stroke | Consumption %75 Load | Tank Capacity | L. x W. x H. | Dry | | | |
| | (1) Standby | (2) Prime | Standby | Prime | | No. | L. | mm. | mm. | L. / sa | L. | mm. | kg. | | | |
| AP 450 | 450 | 410 | 360 | 328 | 2206A-E13TAG3 | 6L | 12.5 | 130 | 157 | 62 | 850 | 3205x1550x2105 | 3260 | MS 80 | 4400 | |
| AP 500 | 500 | 455 | 400 | 364 | 2506A-E15TAG1 | 6L | 15.2 | 137 | 171 | 72 | 850 | 3266x1550x2105 | 3650 | MS 80 | 4800 | |
| AP 550 | 550 | 500 | 440 | 400 | 2506A-E15TAG2 | 6L | 15.2 | 137 | 171 | 76 | 850 | 3266x1550x2105 | 3880 | MS 80 | 4880 | |
| AP 660 | 660 | 600 | 528 | 480 | 2806A-E18TAG1 | 6L | 18,13 | 145 | 183 | 90 | 1150 | 3450x1800x2178 | 4250 | MS 86-AP660 | 5670 | |
| AP 715 | 715 | 650 | 572 | 520 | 2806A-E18TAG2 | 6L | 18,13 | 145 | 183 | 97 | 1150 | 3450x1800x2178 | 4850 | MS 86-AP660 | 5750 | |
| AP 825 | 825 | 750 | 660 | 600 | 4006-23TAG2A | 6L | 22.921 | 160 | 190 | 122 | 1500 | 4100x1633x2266 | 5250 | AK 91 | 7300 | |
| AP 850 | 850 | 770 | 680 | 616 | 2806A-E18TTAG5 | 6L | 18.1 | 145 | 183 | 118 | 1600 | 4200x2204x2437 | 5380 | MS 88 | 7350 | |
| AP 880 | 880 | 800 | 704 | 640 | 4006-23TAG3A | 6L | 22.921 | 160 | 190 | 130 | 1500 | 4100x1633x2266 | 5500 | AK 91 | 7500 | |
| AP 900 | 900 | 805 | 720 | 644 | 4006-23TAG3A | 6L | 22.921 | 160 | 190 | 130 | 1500 | 4100x1633x2266 | 6250 | AK 91 | 7650 | |
| AP 1000 | 1000 | 910 | 800 | 728 | 4008TAG1A | 8L | 30.561 | 160 | 190 | 143 | 1500 | 4786x1973x2205 | 6670 | AK 96-AP1125 | 10200 | |
| AP 1125 | 1125 | 1023 | 900 | 818,4 | 4008TAG2A | 8L | 30.561 | 160 | 190 | 162 | 1500 | 4786x1973x2205 | 6920 | AK 96-AP1125 | 10350 | |
| AP 1250 | 1250 | 1125 | 1000 | 900 | 4008-30TAG3 | 8L | 30,56 | 160 | 190 | 188 | 1500 | 4646x2130x2007 | 7000 | AK 96-AP1250 | 11200 | |
| AP 1400 | 1400 | 1265 | 1120 | 1012 | 4012-46TWG2A | 12V | 45.482 | 160 | 190 | 196 | 2000 | 4905x1880x2366 | 8865 | AK 96-AP1400 | 11200 | |
| AP 1650 | 1650 | 1500 | 1320 | 1200 | 4012-46TAG2A | 12V | 45.842 | 160 | 190 | 236 | 2000 | 4920x2120x2410 | 10200 | AK 98 | 14300 | |
| AP 1875 | 1875 | 1705 | 1500 | 1364 | 4012-46TAG3A | 12V | 45.842 | 160 | 190 | 272 | 2000 | 5790x2220x2787 | 10400 | AK 99 | 17500 | |
| AP 2000 | 2000 | 1850 | 1600 | 1480 | 4016-61TRG1 | 16V | 61.123 | 160 | 190 | 300 | 2000 | 5900x2390x3020 | 13550 | AK 99 | 17550 | |
| AP 2250 | 2250 | 2000 | 1800 | 1600 | 4016-61TRG2 | 16V | 61.123 | 160 | 190 | 312 | 2000 | 5900x3020x2390 | 13550 | AK 99 | 17550 | |
| AP 2500 | 2500 | 2250 | 2000 | 1800 | 4016-61TRG3 | 16V | 61.123 | 160 | 190 | 349 | 2000 | 5900x2390x3020 | 14000 | AK 99t | 18000 | |

(1) Emergency Standby Power (ESP): Applicable for supplying power to varying electrical load for the duration of power interruption of a reliable utility source ESP is in accordance with ISO 8528. Overload is not allowed.

(2) Prime Power (PRP): Applicable for supplying power to varying electrical load for unlimited hours. 10% overload capability is available for a period *ISO 8528: Ratings are given for 25 °C ambient temperature. Altitude: 100 m. above sea level. Derating, please contact us or refer to data sheet.

Manufacturer reserves the right to make changes in model, technical specifications, color, equipment and accessories without prior notice.

Diesel Generating Sets



Standard Open Set Specifications

- DOOSAN 4 cycle, water cooled, 1500 rpm diesel engine
- Compact power units
- Engine mounted cooling radiator and fan
- Electronic governor control
- Electric Starter & charge alternator (24 V D.C.)
- Normal duty, dry type air filter
- Single bearing alternator, IP23 enclosure, class H insulation
- Standard voltage 400 / 230 V A.C., 50 Hz
- Welded steel base frame with A / V mounting
- Fuel tank built in the base frame
- Flexible fuel connection hoses and lube-oil drain valve fitted
- 24 V D.C. battery set with cables and rack
- Industrial silencer and steel bellows delivered loose
- Engine jacket water heater
- Manual for use and installation
- Optional silent enclosure

Three Phase Generating Sets General Specifications

| Genset Specifications | | | | | Engine Specification | | | | | | | Open Version Genset | | Canopy Version Genset | | Control Panel |
|------------------------------------|--------------|-----------|--------------|-------|----------------------|----------|--------|------|--------|----------------------|---------------|---------------------|------|-----------------------|------------|---------------|
| 50 Hz., 400 / 230V. ⁽¹⁾ | | | | | Model | Cylinder | | | | Fuel | | Dimension & Weight | | Canopy Model | Dry Weight | Model |
| Model Name | kVA Cosφ 0,8 | | kW ISO 8528* | | | Type | Dis. | Bore | Stroke | Consumption %75 Load | Tank Capacity | L. x W. x H. | Dry | | | |
| | (1) Standby | (2) Prime | Standby | Prime | | No. | L. | mm. | mm. | L. / h. | L. | mm. | kg. | kg. | Auto | |
| AD 185 | 185 | 168 | 148 | 134,4 | P086TI-1 | 6L | 8.071 | 111 | 139 | 26.7 | 380 | 2341x1150x1845 | 1750 | AK 50 TRP | 2050 | P 732 |
| AD 220 | 220 | 200 | 176 | 160 | P086TI | 6L | 8.071 | 111 | 139 | 31.7 | 380 | 2341x1150x1845 | 1830 | AK 50 TRP | 2205 | |
| AD 275 | 275 | 250 | 220 | 200 | P126TI | 6L | 11.051 | 123 | 155 | 43.6 | 470 | 2881x1300x1785 | 2335 | MS 60 | 2985 | |
| AD 330 | 330 | 300 | 264 | 240 | P126TI-II | 6L | 11.051 | 123 | 155 | 47 | 470 | 2881x1300x1785 | 2410 | MS 60 | 3100 | |
| AD 410 | 410 | 370 | 328 | 296 | DP126LB | 6L | 11.051 | 123 | 155 | 57.1 | 700 | 2969x1550x1912 | 3050 | MS 70 | 3920 | |
| AD 490 | 485 | 425 | 388 | 340 | P158LE | 8V | 14.618 | 128 | 142 | 65.1 | 700 | 2900x1550x2038 | 3170 | MS 70 TRP | 4190 | |
| AD 510 | 510 | 460 | 408 | 368 | DP158LC | 8V | 14.618 | 128 | 142 | 72.9 | 700 | 2900x1550x2064 | 3190 | MS 70 TRP | 4140 | |
| AD 580 | 580 | 525 | 464 | 420 | DP158LD | 8V | 14.618 | 128 | 142 | 83.4 | 700 | 3016x1550x2055 | 3390 | MS 70 TRP | 4240 | |
| AD 630 | 630 | 575 | 504 | 460 | DP180LA | 10V | 18.273 | 128 | 142 | 94.2 | 850 | 3205x1550x2029 | 3720 | MS 80 TRP | 4835 | |
| AD 710 | 710 | 640 | 568 | 512 | DP180LB | 10V | 18.273 | 128 | 142 | 103.8 | 850 | 3205x1550x2029 | 4000 | MS 80 TRP | 4940 | |
| AD 750 | 740 | 675 | 592 | 540 | DP222LB | 12V | 21.927 | 128 | 142 | 109.2 | 1000 | 3470x1550x2302 | 4190 | MS 85 TRP | 5400 | |
| AD 825 | 825 | 750 | 660 | 600 | DP222LC | 12V | 21.927 | 128 | 142 | 119.1 | 1000 | 3470x1550x2302 | 4320 | MS 85 TRP | 5535 | |
| AD 900 | 900 | 810 | 720 | 648 | DP222CB | 12V | 21.927 | 128 | 142 | 145 | - | - | - | MS 88 | - | |
| AD 1015 | 1015 | 915 | 812 | 732 | DP222CC | 12V | 21.927 | 128 | 142 | 162 | 1600 | 4200x2204x2257 | - | MS 88 | 7220 | |

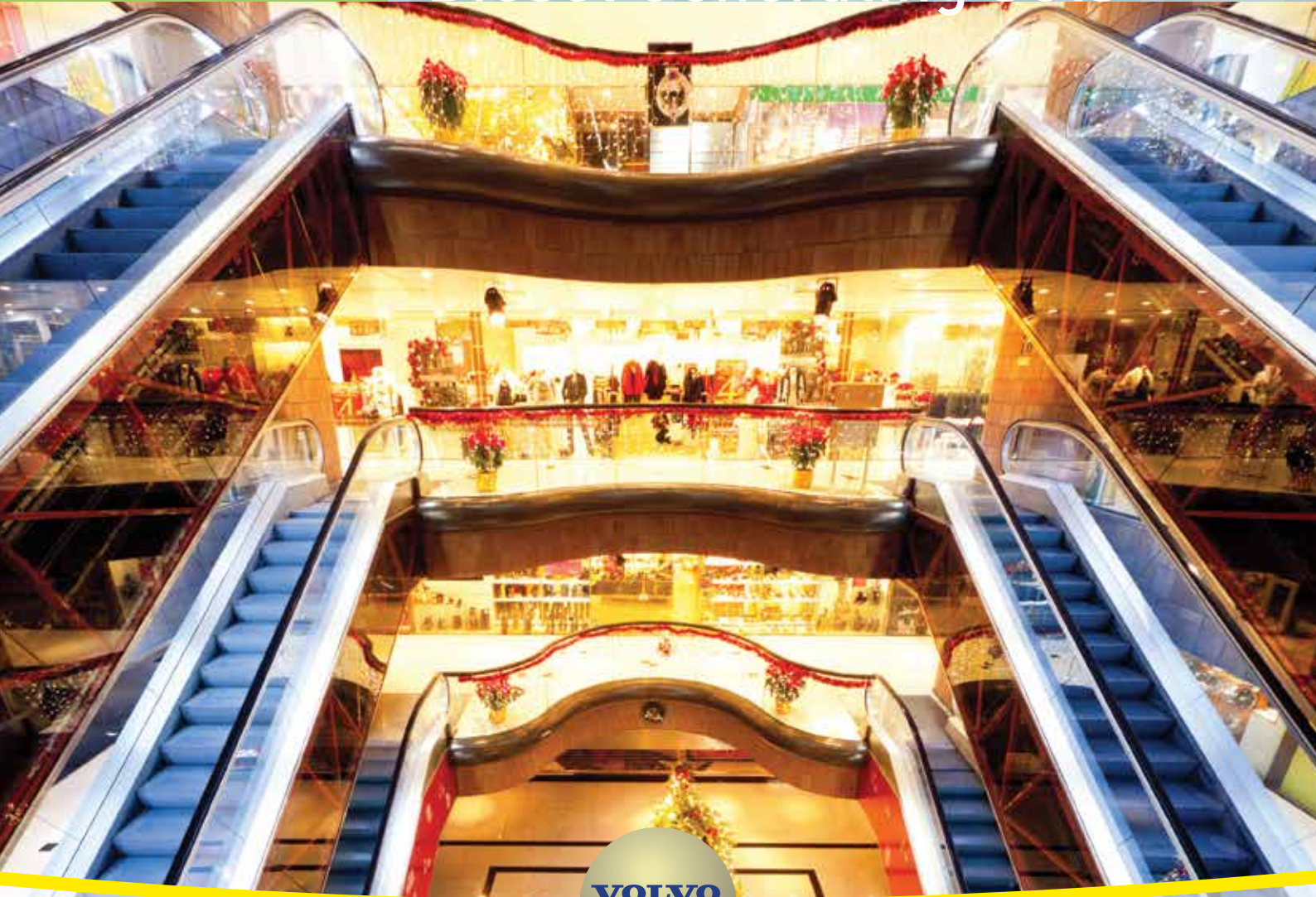
(1) Emergency Standby Power (ESP): Applicable for supplying power to varying electrical load for the duration of power interruption of a reliable utility source ESP is in accordance with ISO 8528. Overload is not allowed.

(2) Prime Power (PRP): Applicable for supplying power to varying electrical load for unlimited hours. 10% overload capability is available for a period

*ISO 8528: Ratings are given for 25 °C ambient temperature. Altitude: 100 m. above sea level. Derating, please contact us or refer to data sheet.

Manufacturer reserves the right to make changes in model, technical specifications, color, equipment and accessories without prior notice.

Diesel Generating Sets



**VOLVO
PENTA**



Standard Open Set Specifications

- VOLVO 4 cycle, water cooled, 1500 rpm diesel engine
- Compact power units
- Engine mounted cooling radiator and fan
- Electronic governor control
- Electric Starter & charge alternator (24 V D.C.)
- Normal duty, dry type air filter
- Single bearing alternator, IP23 enclosure, class H insulation
- Standard voltage 400 / 230 V A.C., 50 Hz
- Welded steel base frame with A / V mounting
- Fuel tank built in the base frame
- Flexible fuel connection hoses and lube-oil drain valve fitted
- 24 V D.C. battery set with cables and rack
- Industrial silencer and steel bellows delivered loose
- Engine jacket water heater
- Manual for use and installation
- Optional silent enclosure

Three Phase Generating Sets General Specifications

| Genset Specifications | | | | | Engine Specification | | | | | | | Open Version Genset | | Canopy Version Genset | | Control Panel |
|------------------------------------|--------------|-----------|--------------|-------|----------------------|----------|-------|------|--------|----------------------|---------------|---------------------|------|-----------------------|------------|---------------|
| 50 Hz., 400 / 230V. ⁽¹⁾ | | | | | Model | Cylinder | | | | Fuel | | Dimension & Weight | | Canopy Model | Dry Weight | Model |
| Model Name | kVA Cosφ 0,8 | | kW ISO 8528* | | | Type | Dis. | Bore | Stroke | Consumption %75 Load | Tank Capacity | L. x W. x H. | Dry | | | |
| | (1) Standby | (2) Prime | Standby | Prime | | No. | L. | mm. | mm. | L. / h. | L. | mm. | kg. | kg. | Auto | |
| AVP 275 | 275 | 250 | 220 | 200 | TAD734GE | 6L | 7.15 | 108 | 130 | 43,48 | 470 | 2750x1300x1777 | 2355 | MS 60 | 2885 | P 732 |
| AVP 350 | 350 | 320 | 280 | 256 | TAD1341GE | 6L | 12.78 | 131 | 158 | 48.1 | 700 | 2900x1550x1923 | 2940 | MS 70 | 3970 | |
| AVP 385 | 385 | 350 | 308 | 280 | TAD1342GE | 6L | 12.78 | 131 | 158 | 53.3 | 700 | 2900x1550x1923 | 2990 | MS 70 | 3980 | |
| AVP 415 | 415 | 380 | 332 | 304 | TAD1343GE | 6L | 12.78 | 131 | 158 | 57,05 | 700 | 2953x1550x1923 | 3190 | MS 70 | 4080 | |
| AVP 450 | 450 | 410 | 360 | 328 | TAD1344GE | 6L | 12.78 | 131 | 158 | 62.31 | 700 | 2934x1550x1923 | 3210 | MS 70 | 4240 | |
| AVP 505 | 505 | 455 | 404 | 364 | TAD1345GE | 6L | 12.78 | 131 | 158 | 68,13 | 700 | 2934x1550x1923 | 3240 | MS 70 | 4245 | |
| AVP 550 | 550 | 500 | 440 | 400 | TAD1641GE-B | 6L | 16.12 | 144 | 165 | 78,21 | 850 | 3341x1550x2196 | 3240 | MS 80 | 4660 | |
| AVP 660 | 660 | 600 | 528 | 480 | TAD 1642GE-B | 6L | 16.12 | 144 | 165 | 88,4 | 850 | 3341x1550x2196 | 3250 | MS 80 | 4970 | |
| AVP 720 | 720 | 650 | 576 | 520 | TWD1644GE | 6L | 16.12 | 144 | 165 | 106,53 | 1000 | 3537x1550x2253 | - | MS 85 | - | |
| AVP 770 | 770 | 700 | 616 | 560 | TWD1645GE | 6L | 16,12 | 144 | 165 | 121,1 | 1000 | 3465x1550x2255 | 4550 | MS 85 | 5800 | |

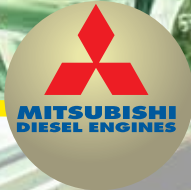
(1) Emergency Standby Power (ESP): Applicable for supplying power to varying electrical load for the duration of power interruption of a reliable utility source ESP is in accordance with ISO 8528. Overload is not allowed.

(2) Prime Power (PRP): Applicable for supplying power to varying electrical load for unlimited hours. 10% overload capability is available for a period

*ISO 8528: Ratings are given for 25 °C ambient temperature. Altitude: 100 m. above sea level. Derating, please contact us or refer to data sheet.

Manufacturer reserves the right to make changes in model, technical specifications, color, equipment and accessories without prior notice.

Diesel Generating Sets



Standard Open Set Specifications

- MITSUBISHI 4 cycle, water cooled, 1500 rpm diesel engine
- Compact power units
- Engine mounted cooling radiator and fan
- Electronic governor control
- Electric Starter & charge alternator (24 V D.C.)
- Normal duty, dry type air filter
- Single bearing alternator, IP23 enclosure, class H insulation
- Standard voltage 400 / 230 V A.C., 50 Hz
- Welded steel base frame with A / V mounting
- Fuel tank built in the base frame
- Flexible fuel connection hoses and lube-oil drain valve fitted
- 24 V D.C. battery set with cables and rack
- Industrial silencer and steel bellows delivered loose
- Engine jacket water heater
- Manual for use and installation
- Optional silent enclosure

Three Phase Generating Sets General Specifications

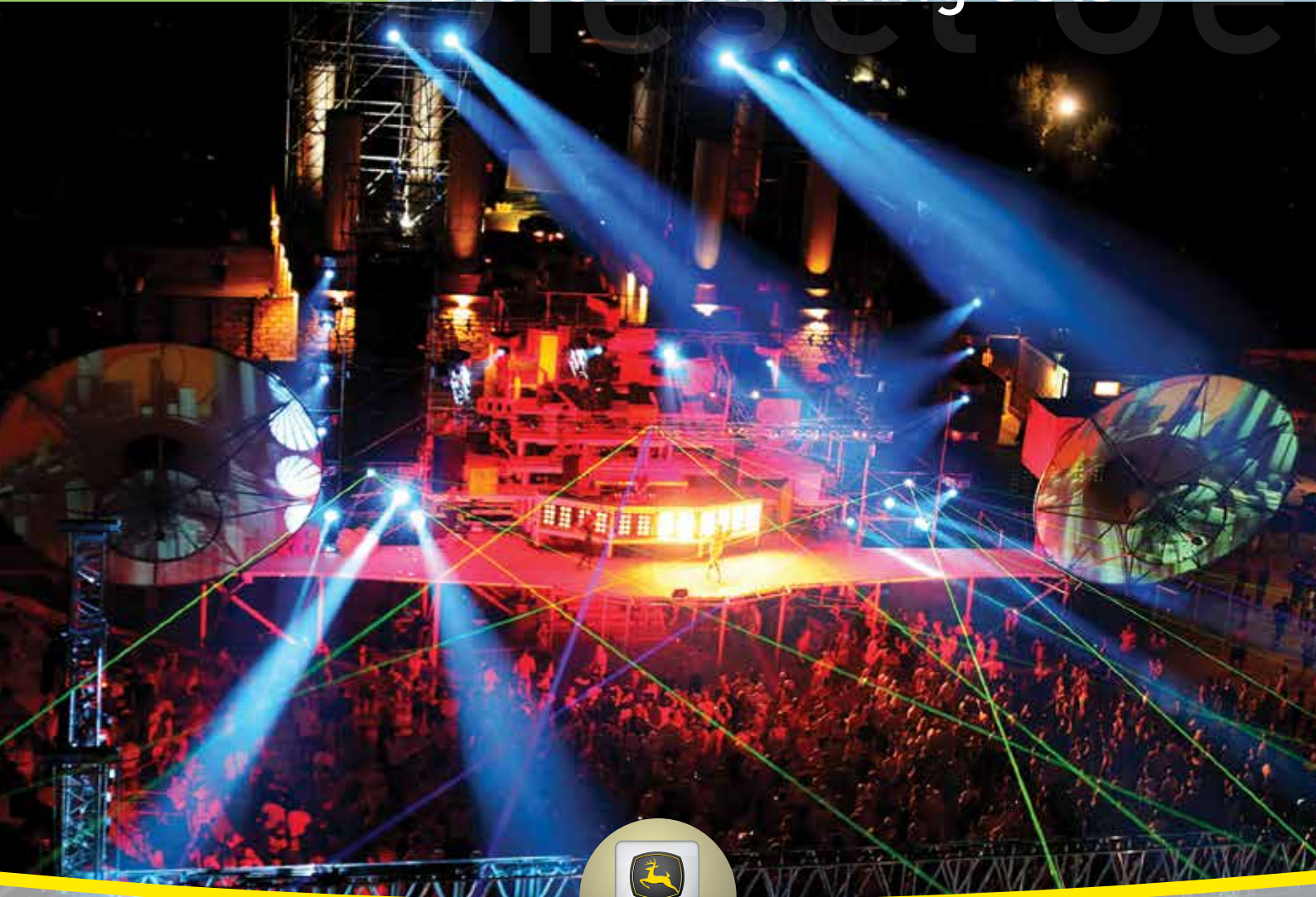
| Genset Specifications | | | | | Engine Specification | | | | | | Open Version Genset | | Canopy Version Genset | | Control Panel | |
|------------------------------------|--------------|-----------|--------------|-------|----------------------|----------|-------|------|--------|----------------------|---------------------|--------------------|-----------------------|--------------|---------------|-------|
| 50 Hz., 400 / 230V. ⁽¹⁾ | | | | | Model | Cylinder | | | | Fuel | | Dimension & Weight | | Canopy Model | Dry Weight | Model |
| Model Name | kVA Cosφ 0,8 | | kW ISO 8528* | | | Type | Dis. | Bore | Stroke | Consumption %75 Load | Tank Capacity | L. x W. x H. | Dry | | | |
| | (1) Standby | (2) Prime | Standby | Prime | | No. | L. | mm. | mm. | L. / h. | L. | mm. | kg. | kg. | Auto | |
| APD 1425 M | 1425 | 1290 | 1140 | 1032 | S12R-PTA | 12V | 49.03 | 170 | 180 | 204.7 | 2000 | 4390x2040x2217 | 9300 | AK 96 | 13580 | P 732 |
| APD 1650 M | 1650 | 1500 | 1320 | 1200 | S12R-PTAA2 | 12V | 49.03 | 170 | 180 | 234.2 | 2000 | 4980x2192x3022 | 11400 | AK 99 | 15450 | |
| APD 1915 M | 1915 | 1750 | 1532 | 1400 | S16R-PTA | 16V | 65.37 | 170 | 180 | 260.9 | 2000 | 5148x2245x2545 | 13850 | AK 99 | 17700 | |
| APD 2100 M | 2100 | 1875 | 1680 | 1500 | S16R-PTA2 | 16V | 65.37 | 170 | 180 | 305.1 | 2000 | 5223x2245x2608 | 13100 | AK 99 | 18350 | |
| APD 2250 M | 2250 | 2000 | 1800 | 1600 | S16R-PTAA2 | 16V | 65.37 | 170 | 180 | 313.1 | 2000 | 5700x2192x3390 | 14200 | AK 99 | 19000 | |
| APD 2500 M | 2500 | 2250 | 2000 | 1800 | S16R2-PTAW | 16V | 79.9 | 170 | 220 | 349 | 2000 | 6146x2380x3392 | 14700 | AK 100 | 21420 | |

(1) Emergency Standby Power (ESP): Applicable for supplying power to varying electrical load for the duration of power interruption of a reliable utility source ESP is in accordance with ISO 8528. Overload is not allowed.

(2) Prime Power (PRP): Applicable for supplying power to varying electrical load for unlimited hours. 10% overload capability is available for a period *ISO 8528: Ratings are given for 25 °C ambient temperature. Altitude: 100 m. above sea level. Derating, please contact us or refer to data sheet.

Manufacturer reserves the right to make changes in model, technical specifications, color, equipment and accessories without prior notice.

Diesel Generating Sets



Standard Open Set Specifications

- JOHN DEERE 4 cycle, water cooled, 1500 rpm diesel engine
- Compact power units
- Engine mounted cooling radiator and fan
- Mechanical governor
- Electronic governor (AJD 275)
- Electric Starter & Charge alternator
- Normal duty, dry type air filter
- Single bearing alternator, IP23 enclosure, class H insulation
- Standard voltage 400 / 230 V A.C., 50 Hz
- Welded steel base frame with A / V mounting
- Fuel tank built in the base frame
- Flexible fuel connection hoses and lube-oil drain valve fitted
- 12 V D.C. battery with Cables and Rack
- Industrial silencer and steel bellows delivered loose
- Engine jacket water heater
- Manual for use and installation
- Modular silent canopies are available on the whole range

Three Phase Generating Sets General Specifications

| Genset Specifications | | | | | Engine Specification | | | | | | Open Version Genset | | Canopy Version Genset | | Control Panel | |
|------------------------------------|-----------------|--------------|-----------------|-------|----------------------|----------|------|------|--------|-------------------------|---------------------|--------------------|-----------------------|--------------|---------------|-------|
| 50 Hz., 400 / 230V. ⁽¹⁾ | | | | | Model | Cylinder | | | | Fuel | | Dimension & Weight | | Canopy Model | Dry Weight | Model |
| Model Name | kVA Cosφ 0,8 | | kW ISO 8528* | | | Type | Dis. | Bore | Stroke | Consumption %75 Load | Tank Capacity | L. x W. x H. | Dry | | | |
| | (2) Standby | (3) Prime | Standby | Prime | | No. | L. | mm. | mm. | L. / h. | L. | mm. | kg. | | | |
| AJD 33 | 33 | 30 | 26,4 | 24 | 3029DF620 | 3L | 2.9 | 106 | 110 | 4.7 | 70 | 2096x960x1500 | 735 | AK 20 | 915 | P 612 |
| AJD 44 | 44 | 40 | 35,2 | 32 | 3029TF620-A15 | 3L | 2.9 | 106 | 110 | 7.6 | 130 | 1780x950x1258 | - | AK 30 | 1080 | |
| AJD 66 | 66 | 60 | 52,8 | 48 | 3029HF620 | 3L | 2.9 | 106 | 110 | 10.7 | 130 | 1780x950x1350 | 850 | AK 30 | 1400 | |
| AJD 88 | 88 | 81 | 70,4 | 64,8 | 4045TF620-A15 | 4L | 4.5 | 106 | 127 | 15.12 | 240 | 2150x1500x1534 | 1180 | AK 40 | 1580 | |
| AJD 110 | 110 | 100 | 88 | 80 | 4045HF620 | 4L | 4.5 | 106 | 127 | 17.9 | 240 | 2150x1050x1520 | 1220 | AK 40 | 1570 | |
| AJD 132 | 132 | 120 | 105,6 | 96 | 6068TF220 | 6L | 6.8 | 106 | 127 | 20.2 | 340 | 2300x1080x1618 | - | AK 49 | 1870 | |
| AJD 170 | 170 | 155 | 136 | 124 | 6068HF120 | 6L | 6,8 | 106 | 127 | 26.23 | 340 | 2399x1080x1657 | 1540 | AK 49 | 1960 | |
| AJD 200 | 200 | 180 | 160 | 144 | 6068HF120(183) | 6L | 6,8 | 106 | 127 | 31.3 | 340 | 2399x1080x1657 | 1650 | AK 49 | 2050 | |
| AJD 220 | 220 | 200 | 176 | 160 | 6068HF620 | 6L | 6,8 | 106 | 127 | 35 | 340 | 2300x1080x1753 | - | AK 49 | - | |
| AJD 275 | 275 | 250 | 220 | 200 | 6068HF655 | 6L | 6,8 | 106 | 127 | 40.4 | 470 | 2750x1300x1728 | 2055 | MS 60 | 2735 | |

(1) Emergency Standby Power (ESP): Applicable for supplying power to varying electrical load for the duration of power interruption of a reliable utility source ESP is in accordance with ISO 8528. Overload is not allowed.

(2) Prime Power (PRP): Applicable for supplying power to varying electrical load for unlimited hours. 10% overload capability is available for a period of 1 hour with in 12 hour period of operation.

* ISO 8528: Ratings are given for 25 °C ambient temperature. Altitude: 100 m. above sea level. Derating, please contact us or refer to data sheet.

Manufacturer reserves the right to make changes in model, technical specifications, color, equipment and accessories without prior notice.

| | Main Features | Panel Models | |
|--|------------------------------------|--------------|----------------|
| | | P 732 | P 612 |
| Operation | Control with | DSE7320 MKII | DSE 6120 MKIII |
| | Modes: Stop/Auto/Manual/Test/Start | • | • |
| | LCD display Scroll push-button | • | • |
| | Eventlog push button | 250 | 100 |
| | Menu navigation buttons | • | • |
| | Transfer to mains button | • | • |
| | Transfer to generator button | • | • |
| | Emergency stop push-button | • | • |
| Genset Instruments | 3 Phase voltage UV, VW, WU | • | • |
| | Neutral NU, NV, NW | • | • |
| | 3 Phase current U, V, W | • | • |
| | Frequency | • | • |
| | Total kVA | • | • |
| | Total kW | • | • |
| | Power factor Cosφ | • | • |
| | kVAr | • | • |
| | kWh, kVAh, kVArh | • | • |
| | Phase sequence | • | x |
| | Earth current | ◦ | x |
| Mains Instruments | 3 Phase voltage L1L2, L2 L3, L3L1 | • | • |
| | Neutral NL1, NL2, NL3 | • | • |
| | Frequency | • | • |
| Engine Instruments | Oil pressure | • | • |
| | Coolant temperature | • | • |
| | Run time | • | • |
| | Speed in RPM | • | • |
| | Battery voltage | • | • |
| | Fuel Level | ◦ | ◦ |
| | Engine maintenance due | • | • |
| | | | |
| Engine Shut Down Protection | Low oil pressure | • | • |
| | High engine temperature | • | • |
| | Under / Over speed | • | • |
| | Low water level | • | ◦ |
| | Fail to start | • | • |
| | Stop failure | • | • |
| | Emergency stop | • | • |
| | Oil pressure sensor open | • | • |
| Engine Pre-alarms Warning | Charge fail | • | • |
| | Low oil pressure | • | • |
| | High engine temperature | • | • |
| | Low engine temperature | • | • |
| | Low/ High battery volts | • | • |
| | Under speed | • | • |
| | Low fuel level | ◦ | ◦ |
| Alternator Shut Down Protection | Under / Over volt | • | • |
| | Under / Over frequency | • | • |
| | Over current | • | • |
| | kW over load | • | • |
| | Unbalanced Load | • | x |
| | Negative phase sequence | • | x |
| | Earth fault | ◦ | x |
| | Phase rotation | • | x |
| | Short circuit | ◦ | ◦ |
| Alternator Pre-alarms | Under / Over volt | • | • |
| | Under / Over frequency | • | • |
| | kW over load | • | ◦ |
| | Negative phase sequence | • | x |
| Mains Failure | Under / Over volt | • | • |
| | Under / Over frequency | • | • |
| | Out of limit | • | • |
| Auto | ATS change - over control | • | • |
| | Remote start | • | • |
| Miscellaneous | Static battery charger | • | • |
| | Water preheating control | • | • |
| | Alarm buzzer | ◦ | x |
| | RS 232 communication | • | x |
| | RS 485 communication | • | x |


DSE 6120

DSE 7320


Transfer Switches

Automatic “Mains / Standby Changeover Switches for Load Transfer

General Technical Specifications

Aksa Supplies a full range Mains - Standby changeover Switches.

A substantial sheet steel enclosure with full width hinged and lockable access door housing the following equipment:

- Twin three pole or four pole electrically interlocked mains / standby changeover contactors or for application where high current rating (above 900 amperes) has to be switched motorized circuit breakers.
- Mains / alternator / load connections or cooper bar
- Control cabling terminal block and protection fuses
- Bottom cable entry



| | 25A-125A | 135A-165A | 200A-275A | 300A-500A | 600A-1050A | 1050A-1600A | 2000A-4000A* |
|----------------------------|----------|-----------|-----------|-----------|------------|-------------|--------------|
| 3 poles | • | • | • | • | • | • | • |
| 380 / 400 V. (3 phase) | • | • | • | • | • | • | • |
| Changeover by contactor | • | • | • | • | • | X | X |
| Changeover by motorised CB | X | X | X | X | X | • | • |
| Terminals | • | X | X | X | X | X | X |
| Copper Bar | •** | • | • | • | • | • | • |
| Width (mm.) | 450 | 650 | 650 | 750 | 615 | 615 | 800 |
| Height (mm.) | 450 | 500 | 500 | 600 | 1600-1700 | 1600-1700 | 2050 |
| Depth (mm.) | 165 | 330 | 330 | 370 | 630 | 630 | 800 |
| Wall Mounting Panel IP42 | • | • | • | • | X | X | X |
| Floor Standing Panel IP42 | X | X | X | X | • | • | • |

* Depending to total group power, It can be multiple use of 3

** 70A and above

Silent Power Canopies



AK 10 - 20 - 30



AK 40 - 50



MS 60 - 70



MS 80 - 88



AK 90 - 96 - 98



AK 99 - 100





General Specifications of Silent Type Enclosure

For; From AK 10 - 50 and MS 60 - 88 Models

- Modular design.
- Soundproofed canopy kit.
- Anti - corrosion powder coated phosphate priming.
- Colour black / yellow (RAL 9005 / RAL 1003).
- Insulated with acoustic foam lining.
- Two and four point lifting capability for full weight.
- Heat shield protection.
- Lockable doors with key.
- Protective mesh for rotating parts.
- Exterior emergency stop push button.
- Residential silencer inside canopy.
- Thermally insulated engine exhaust system.
- Doors on each side.
- Panel window.
- Access to radiator filling or cap.
- Oil drains and breather (sump) extended outside canopy
- On road trailer for soundproofed canopy is available.
- Aksa makes its generating sets' noise level tests in accordance with directive 2000/14/EC validation of the noise level test has been approved by the notified body Szutest.
- MS 80, 85, 88 lifting hooks should be removed during transportation for 40 Ft high cube container

For; From AK90 to AK99 Models

- Modular design.
- Require a concrete pad.
- Model AK 99 enclosure is drop over style.
- Body made from steel components treated with polyester powder coating.
- Acoustic fire retardant foam is covered inside the enclosure.
- Easy access to all service points and integrated ladder.
- The enclosure have four lifting points.
- Cooling fan and battery charging alternator guarded.
- Control panel viewing window in a lockable access door.
- Colour black / yellow (RAL 9005 / RAL 1003).
- Sump oil draining manual pump.
- Breather (sump) extended outside the enclosure.
- Enclosure floor is covered with chequered aluminium plates (AK90-AK98)

| Canopy Model | | AK 10 | AK 11 | AK 20 | AK 21 | AK 30 | AK 40 | AK 49 | AK 50 | MS 60 | MS 70 |
|--------------|-----|-------|-------|-------|-------|-------|-------|-------|-------|-------|-------|
| Length | mm. | 1850 | 1955 | 2100 | 2096 | 2466 | 3100 | 3402 | 3402 | 3960 | 4460 |
| Width | mm. | 910 | 910 | 960 | 1030 | 1010 | 1113 | 1147 | 1217 | 1356 | 1606 |
| Height | mm. | 1181 | 1171 | 1441 | 1290 | 1553 | 1811 | 2032 | 2032 | 2167 | 2547 |
| Fuel Tank | L. | 50 | 38 | 70 | 80 | 130 | 240 | 340 | 380 | 470 | 700 |

| Canopy Model | | MS 80 | MS 85 | MS 86 | MS88 - AD1015 | AK 90 | AK 91 | AK 96 | AK 98 | AK 99 | AK 100 |
|--------------|-----|-------|-------|-------|---------------|-------|------------|-------|-------------|-------------|-------------|
| Length | mm. | 4810 | 5297 | 5410 | 5513 | 6500 | 5920 | 7500 | 9000 | 9000 | 9633 |
| Width | mm. | 1606 | 1606 | 1864 | 2260 | 2200 | 2200 | 2300 | 2270 | 2800 | 2800 |
| Height | mm. | 2615 | 2656 | 2654 | 2655 | 2353 | 2353/ 3328 | 2500 | 2500 / 3170 | 3300 / 4800 | 3300 / 4700 |
| Fuel Tank | L. | 850 | 1000 | 1300 | 1600 | 1100 | 1500 | 1500 | 1900 | 2200 | - |



General Specifications of Silent Type CONTAINER

- Four sizes are available: 20, 30, 40 feet High Cube containers.
- Sandwich mineral wool attenuation for wall and ceiling.
- Ribbed aluminium sheet internal floor.
- Large lockable doors.
- Acoustic baffles for the air inlet and outlet.
- 1250 litres and 2000 litres fuel tank with retention bund.
- Residential silencer with stainless steel flexible bellows.
- Ceiling mounted fluorescent light fittings.
- White paint finishing (RAL 9010).



| Enclosures Model | | SC20 | SC30 | SCH30 | SC40 | SCH40 |
|------------------|-----|------|------|-------|-------|-------|
| Length | mm. | 6060 | 9130 | 9130 | 12200 | 12200 |
| Width | mm. | 2440 | 2440 | 2440 | 2440 | 2440 |
| Height | mm. | 2591 | 2600 | 2800 | 2600 | 2800 |
| Fuel Tank | L. | - | 2000 | 2000 | 2000 | 2000 |

Lighting Towers

Mobile Lighting Tower ALT 12D - ALT 16D

Features

- 7 meter hand operated
- 1500 rpm diesel engine
- Quite operation
- Manuel winch system
- Simple one-staff operation
- Generating set can be disassembled

Everywhere

- Buildings sites
- Road and railway areas
- Pipe-Line areas
- Civil defense

Generating Set

- 1500 rpm, water cooled diesel engine
- Electrical start
- Dry type air cleaner
- Quite, canopy
- 12 V. maintenance-free battery
- Key start panel with engine protection
- Three phase, 400 V/230 V, 50 Hz alternator and output switch
- APD 12 (10,5 kVA) - APD 16 (14,5 kVA) prime power generator

Mast

- 7 meters, 3 section
- Manuel winch system
- Simple one-staff operation
- Double winch system for raising and tittling

Flood Lights

- 4 x 500 or 4 x 1000 watts halide lamps
- Non corrosive aluminium housing
- Against rain and moisture glass and seals

Canopy

- Sound proof canopy with compact design
- Sheet metal parts are painted with electrostatic powder paint canopy
- Easy installation and operation
- Look at the operation in the transparent window



Dimensions and Weights

- Height - Trailer with : 4350 mm
- Width - Trailer with : 1430 mm
- Height : 1900 mm

Trailer

- Single axle, torsion bar suspension
- 50 mm. towing eye
- 13" wheels (175 / 70 R13)
- Against corrosive painted chassis
- Trailer with lack lift

ALT 4200D Mobile Diesel Generating Set with Lighting Tower

Features

- 7 meter telescopic mast
- Portable, compact diesel generating set
- The electrical start diesel engine
- Quite operation
- Simple one-staff operation
- 3 x 1000 watt halogen or metal halide lamps
- Demontables generating set group

Generating Set

- 3000 rpm, air cooled diesel engine.
- Electrical start
- Quite, canopy
- Generating set output jack
- Dry type air cleaner
- 12 V. maintenance-free battery
- Generating set starter panel
- Single phase, 230 V, 50 Hz alternator

Mast

- 3 meter, 7 section
- Manuel winch system
- Simple one-staff operation
- Double winch system for raising and titling

Flood Lights

- 3 x 1000 watts metal halide lamps.
- Non - corrosive, - cast aluminum husing
- Silicone gaskets for moisture protection, IP 65 class

Canopy

- Sound proof canopy with compact design
- 12 hours run capacity fuel tank

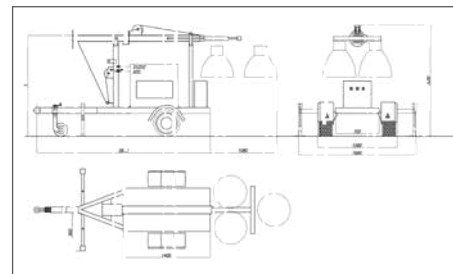
Trailer

- Single axle, torsion bar suspension
- 50mm. tower eye
- 13" wheels (175 / 70 R13)
- Against corrosive painted chassis
- Trailer with lack lift
- On both sides, can be opened sideways, folding, telescopic stabilizer feet



Dimensions and Weights

- Lenght (with trailer) : 3950 mm
- Width (with trailer) : 1280 mm
- Height : 1810 mm
- Width (telescopic feet open) : 1900 mm



Branch Offices & Warehouses



ALGERIA
EURL AKSA Générateurs Algérie
Zone Industrielle Oued Smar, Lot No:55,
Harrach CP:16270 Alger / Algeria
T : +213 (0) 555 01 27 00 - 04
e-mail: contact@aksa-dz.com



IRAQ
Aksa Power Generation (Iraq)
English Village House
No:353 Arbil / Iraq
T : + 964 (0) 770 761 12 20
e-mail: export@aksa.com.tr



RUSSIA
Aksa Russia
119530, Moscow Ochakovskoe Highway, 34,
BC 'WEST PARK', Office A308/3 Russia
T : +7 495 710 88 62
e-mail: info@aksarusssia.ru



U.A.E.
Power Generation FZE
PLOT NO: S20128 Jebel Ali Free Zone,
Po Box:18167 Dubai / UAE
T : + 971 4 880 91 40
e-mail: sales@aksa.ae



VIETNAM
Aksa Vietnam
90 V6 Thj Sau St., Tan Dinh Ward, District 1,
Hochiminh City, Vietnam
T: +848 391 47 014
e-mail: vietnam@aksapowergen.com



CHINA
Aksa Power Generation Co. Ltd.
No.19 Tongjiang North Road,
New District, Changzhou / China
T: + 86 (0) 519 851 50 205
e-mail: sales@aksapowergen.com



KENYA
Aksa Kenya
Sunflag Industrial Park No:3 Mombasa Rd.
P.O. Box 196-00519 Nairobi, Kenya
T : +254 792 423 559
e-mail : info@aksakenya.com



SINGAPORE
Aksa Far East(Pte.) Ltd.
94 Tuas Avenue 11
639103 Singapore
T : + 65 6863 2832
e-mail: aksafe@aksafareast.com.sg



UNITED KINGDOM
Aksa International (UK) Ltd
Unit 6, Pine Court Walker Road, Bardon Hill
Coalville Leicestershire, LE67 1SZ U.Kingdom
T : + 44 (0) 1530 837 472
e-mail: info@aksauk.com



GHANA
Aksa Power Generation [Gana]
PT MC 4 Tema Motorway Industrial Area
Extension off Spintex Rd, Accra / Ghana
T : +233 206 99 88 00
e-mail: info@aksaghana.com



KAZAKHISTAN
Aksa Kazakhstan
89a, Suynbai ave.,
Almaty / Kazakhstan
T : +7 727 338 48 47
e-mail : info@aksakz.kz



SOUTH AFRICA
Aksa Power Generation (South Africa)
109 Roan Crescent, Corporate Park North,
Randjespark, Midrand
Johannesburg / South Africa
T: +27 60 774 64 88
e-mail : info@aksa.co.za



U.S.A.
Aksa USA
371 Exchange Street
West Monroe, LA 71292
T: +1 318 855 83 77
e-mail: sales@aksausa.com



INDONESIA
Menara palma Lantai 3 unit 3-03 jalan HR
Rasuna Said Blok X2 Kav.6 Kelurahan Kuningan
Timur Kecamatan Setabudi Jakarta Selatan,
Jakarta, INDONESIA
Tel: 021 579 57 590
e-mail: info@aksaindonesia.co.id



NETHERLANDS
Merwedestraat 48P 3313CS,
Dordrecht / Netherlands'
T : +31 (0) 78-204 9129
e-mail : sales@aksaeurope.com



SUDAN
Aksa Kenya
Sudan, Khartoum State, Khartoum,
Ryad, Omak Street block 8,
Building Number 4, East Side
e-mail: aksa@aksa.com.tr



UZBEKISTAN
Aksa Uzbekistan
18/1, Dybek str., Mirobod distr., Tashkent,
Uzbekistan
T : +998 78 150 27 47
e-mail: info@aksa.uz

Factory



TURKEY
Yıldırım Beyazıt 05b Mh.
8. Cd. No:1/2/A - 1/3A,
59850 Tekirdağ
T: +90 282 737 96 00
aksa@aksa.com.tr



NETHERLANDS
Merwedestraat 48P 3313CS,
Dordrecht / Netherlands'
T : +31 (0) 78-204 9129
e-mail : sales@aksaeurope.com



CHINA
No.19 Tongjiang North Road,
New District, Changzhou / China
T : + 86 (0) 519 851 50 205
F : + 86 (0) 519 851 50 132
e-mail: aksa@aksapowergen.com



U.S.A.
371 Exchange Street
West Monroe, LA 71292
T: +1 318 855 83 77
F: +1 318 855 83 81
e-mail: sales@aksausa.com



U.A.E.
Power Generation FZE
Po Box:18167 Jebel Ali Free Zone
Warehouse No.RA08 / LC07 - Dubai / UAE
T : + 971 4 880 91 40
F : + 971 4 880 91 41
e-mail: sales@aksa.ae

Aksa Service & Rental



TURKEY
Murat Bey Beldesi,
Güney girişi Cad. No:8
34540 Çatalca / ISTANBUL
T : +90 212 887 12 12
F : +90 212 887 15 25
e-mail: aksakiralama@aksa.com.tr



U.A.E.
Power Generation FZE
Po Box:18167 Jebel Ali Free Zone
Warehouse No.RA08 / LC07 - Dubai / UAE
T : + 971 4 880 91 40
F : + 971 4 880 91 41
e-mail: sales@aksa.ae

